

Grace in Motion 2012 Spring Prison Crusade

Thursday, May 24th — Saturday, May 27th, 2012

**Lowell Correctional Facility/Marion Correctional
Juvenile (Boys) Work Camp
Ocala, Florida**

2012 Spring Grace in Motion Informational Packet Table of Content

1. Event Coordinator Greeting
2. General Information/Event Flyer
3. Grace in Motion Event Schedule
4. About the Facility/ Directions
5. Chaplain/Toiletry Needs
6. Hotel Accommodations/Ocala Area Information
7. Ministry/Event Leaders Contact Information
8. LD Ministries
9. Florida Department of Corrections
 - a. Application
 - b. HIPPA Form

OUTREACH COORDINATOR GREETING

Greetings My Sisters and Brothers in the Lord!

Thank you so much for expressing interest in participating in the upcoming **"2012 Spring Grace in Motion Prison Outreach"** taking place **Thursday, May 24th and Saturday, May 27th, 2012.**



Rev.
LaTousha
Daniels

I am so excited about the opportunity we will have to jointly impact the hearts and lives of the women incarcerated at the Lowell Correctional Facility located in Ocala, Florida.

Following a day of orientation, all volunteers will gather each morning and evening for breakfast/dinner, worship, and prison assignments. Following the morning's activities, teams will then disperse to their respective prisons to spend the remainder of the day at their assigned locations.

Volunteers will canvass the prison yards, dormitories (allowed in most prisons), hall ways, and eating areas witnessing, encouraging, praying, building friendships, and inviting the women to the afternoon or evening chapel services. At each service rotating Ministers will preach the word and be accompanied by praise and worship leaders/minister to offer the hope and praise of the gospel in this very dark environment.

The impact of this ministry is far-reaching. An unusual sense of calm covers over the prison during the crusade and beyond; officers are encouraged, Christian inmates are challenged, and sinners meet God. And as volunteers, we are all reminded of their own inadequacies, and sheer grace of God that we are not where these women are today.

How can you be a part of this mission effort?

Complete your application and **return it by Saturday, April 21st, 2012.**

This would allow the State of Florida 3 weeks to complete the process of approval of all volunteers. Please refer to the contact sheet for area coordinators and ministry fax number.

Quickly, secure your travel and housing accommodations. A recommended list of local hotels is included.

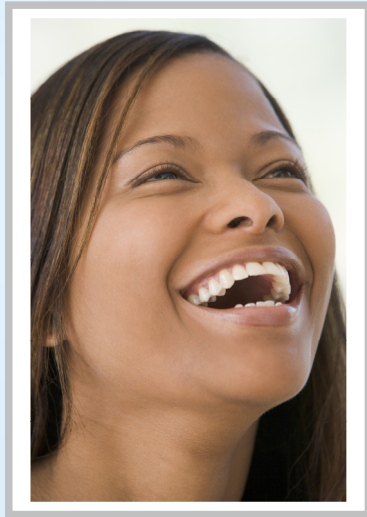
Attend the scheduled **weekly conference calls. The Official Conference call** in number is **(218) 339-2699 Access code: 378047.** (Dates and times are enclosed)

Pray for the Prison Outreach daily. Please include the Grace In Motion Prison Outreach in your prayers daily. Additionally, each volunteer should enlist a personal intercessor who will communicate with their home church and leaders if they are not present.

If you are unable to attend, consider sponsoring a volunteer or past experience has showed that a network of stay-at-home **prayer intercessor** is the key to spiritual breakthroughs during the crusade.

Amazed by His Grace,
Rev. LaTousha Daniels

Prison Outreach Information



The purpose of the Prison Outreach/Crusade is to:

- ❖ To fulfill the "Great Commission" given to the Body of Christ.
- ❖ To minister the word of God to those who are behind prison walls.
- ❖ To demonstrate Christ's Love to those who are hurting.
- ❖ To provide training opportunities for young and developing ministers to share the gospel outside of the traditional church settings.
- ❖ To provide care packages in the form of approved toiletries and bibles for the women who are in need.
- ❖ To provide Community Outreach and access to Educational Services

WHO:

LD Ministries in conjunction with visionary Pastors, Ministers, Ministries and Worship Leaders.

WHAT:

2012 Spring Grace in Motion Prison Crusade

DATES:

Thursday, May 24th –
Saturday, May 27th, 2012

WHERE:

Lowell Correctional Facility
Juvenile Work Camp
Ocala, Florida
(352) 401-5301

HOW CAN I HELP?

- Plan to attend Prison Outreach
- Sponsor a Volunteer
- Pray for the Crusade
- Prepare care packages for the women.
- Give a financial donation in support of the crusade.
- Attend one of the 2012 Grace In Motion Events and Trainings:
 - **Evangelism and Prison Ministry Conference**
March 16th – March 17th
Greater Antioch Baptist
West Palm Beach, Florida
 - **Evangelism and Prison Ministry Seminar**
Saturday, April 14th
Friendship Miss. Baptist Church
Miami, Florida
 - **Evangelism Training and State Certification Training**
Saturday, April 28th
Brandon, Florida
 - **State Certification Training Lowell Correctional**
Thursday, May 27th
Ocala, Florida

FOR MORE INFORMATION

CALL or VISIT:

(305) 638-3338

www.latoushadaniels.com

2012 Spring Grace in Motion Itinerary

Event Schedule

Thursday, May 25th

12 noon	Administrative Team Arrives
1:30 – 3:00pm	Administrative Meeting
12:00 noon – 4:00pm	State Certification Training
6pm – 8pm	Chapel Services-(Juvenile Work-Camp) (Ages 13 – 18)

Friday, May 26th:

9am – 12noon	Prayer, Briefing, and Procedure Training (Required)
12noon -12:30	Lunch Break
12:30pm – 2:30pm	Worship Team Rehearsal
3:00 pm – 4:30 pm	Hotel Check-In/Rest and Prep Time for Service
4:30pm	Prayer, Meeting of Team Leaders, Assignments of Teams
4:45 pm	Departure for Correctional Facilities
5:15 pm -5:45pm	Security Check (At Respective Sites)
6:00 pm - 8pm	Chapel Service in the Annex (Team 1)
6:00 pm - 8pm	Chapel Service in the Main Unit (Team 2)

Saturday, May 27th:

6:30 am	Prayer and Departure (Meeting at Host Hotel)
8:00 am	Security Check
9:00am – 11:15am	Morning Glory Chapel Service in the Annex (Team 2)
9:00am – 11:15am	Morning Glory Chapel Service in the Main Unit (Team 1)
9:00 pm – 11:15	Chapel Service in the (TBA) (Team 3)
11:45am - 12:45pm	All Ministering TEAMS gather at Main Unit for Lunch, Prayer, Fellowship and assignments
1:00pm - 2:30pm	Mid-Day Praise (Outside) All Teams Together (Annex)
6:00 pm - 8:00pm	Chapel Service All Teams Together (Certificate Program)

Conference Call Schedule

Thursday, March 22 nd	7pm	Coordinator's Meeting
Saturday, March 24 th	10am	General Meeting
Saturday, April 7 th	10am	General Meeting
Saturday, April 21 st	10am	General Meeting
Every Saturday in May	10am	General Meeting

***Itinerary Subject to Change**

ABOUT THE FACILITY/DIRECTIONS

The **Lowell Correctional Institute** formerly known as the Florida C.I is the oldest state facility for women. This facility opened in April 1956 as Florida C.I., housing all custody levels including death row.

Florida C.I. originally functioned as the only reception center for female offenders. In 1973 Florida C.I. obtained the Forest Hills School for Girls from the Department of Health and Rehabilitative Services, which is located on the same property. This unit was utilized as a minimum custody open compound styled facility housing around 300 female inmates. The Forest Hills Unit was closed in 1997 for renovation. Levy Forestry Camp was added to Florida C.I. in 1995 as a work camp for female offenders. Its primary mission is labor for the Division of Forestry.

In July 1997 C.A.M.P. Jones was opened as the only "boot camp" styled program for youthful offender females in Florida. In 1998 it was combined with Marion C.I. and in 1999 the name was changed to Lowell C.I./Women's Unit and in 2000 to Lowell C.I. It also houses female youthful offenders as well as pregnant offenders. Lowell Annex, Levy Forestry Camp, Forest Hills Work Camp, and Lowell Basic Training Unit (BTU) are under the supervision of Lowell CI. **Approx. populations is 2340 inmates**

Please visit the below Florida Department of Corrections website link to get more information regarding this facility and view those who we will be ministering to.

As you browse please pray and call their names before the Lord, so that when we arrive, the hearts minds and bodies of these women would be touched, healed, and delivered.

<http://www.dc.state.fl.us/facilities/region3/314.html>

Directions

From I-75 North:

- Take exit 358
- Make a right turn at the end of the exit ramp onto (SR-326 East).
- Proceed East to the first traffic light.
- Turn left on to C-25A
- Institution is approximately 3-4 miles on left.

From I-75 South:

- Take exit 358
- Make a left turn at the end of the exit ramp onto (SR-326 East).
- Proceed East to the second traffic light.
- Turn left on to C-25A
- Institution is approximately 3-4 miles on left.



Chaplaincy Department Donation Need

(Highlighted items are those that LD Ministries would like to focus on but you are welcome to send any of the below items)

LIST OF ITEMS NEEDED

- ◆ **Bibles (especially Large print for seeing impaired) (Dollar General-10.00 each)**
- ◆ 1 Vacuum Cleaners bagless
- ◆ Cases of White copy paper (ongoing need)
- ◆ 50 Black and white Composition books –no spirals or metal (ongoing need due to classes being taught)
- ◆ 50 Folders without fasteners (ongoing need)
- ◆ Lined Paper (ongoing need)
- ◆ Pens and Pencils (ongoing need)
- ◆ Dictionaries
- ◆ **Cards (see attached Form)**
- ◆ **Hygiene's (ongoing need) Shampoo, Conditioner, Deodorant (stick-not roll-on)**
- ◆ Computers with printers and toners (for chapel Clerical and Study needs)
- ◆ CD / Tape Players (for Chapel Study and Media Rooms)
- ◆ DVD / Video Players (for Chapel Study and Media Rooms)
- ◆ 20" Television sets (ongoing need)
- ◆ Amplifiers / Musical or Microphone (for Chapel Services)
- ◆ Speakers (for Chapel Services)
- ◆ Microphones (with cords or cordless)
- ◆ **Sanitary napkins and Tampons**
- ◆ Bookshelves (wooden)
- ◆ Heavy Duty Shredder
- ◆ Gospel Music
- ◆ **Dark n Lovely Perms**

If you are interested in shipping/ mailing your toiletry items in advance please contact the Toiletry/Donation Coordinator(s) to make arrangements. (See Contact Information Sheet)

HOTEL AND AREA INFORMATION

Recommended Hotel and Official Meeting Place

Country Inn and Suites By Carlson Ocala

3720 SW College Road
Ocala, Florida 34474

Telephone: 352-237-0715 Fax: 352-237-3615
Reservations: 1-800-596-2375

Group Rate: \$68.00 (Double Occupancy)
Group Code: LD Ministries/Women Prison

Other Area Hotel Information:

1. [Holiday Inn Hotel & Suites Conference Center](http://hiexpress.com) – hiexpress.com - 352-629-9500
2. [La Quinta Inn-Ocala](http://www.lq.com)-www.lq.com - (352) 861-1137
3. [Quality Inn Ocala](http://www.qualityinn.com)- www.qualityinn.com - (352) 629-0381
4. [Courtyard Ocala](http://marriott.com)- marriott.com - (352) 237-8000
5. [Days Inn-Ocala West](http://www.daysinn.com)- www.daysinn.com - (352) 629-0091
6. [Travelodge Ocala](http://www.travelodge.com) - www.travelodge.com - (800) 578-7878
7. [Seven Sisters Inn](http://sevensistersinn.com)- sevensistersinn.com - (352) 867-1170
8. [Red Roof Inn](http://www.redroof.com) - www.redroof.com - (352) 732-4590

Ocala Area Information

Area Attractions:

Silver Springs <http://www.silversprings.com/> Wild Water <http://wildwaterspark.com/>

If Driving:

Ocala is:

39 miles	from Gainesville (45 minutes)
64 miles	from Orlando (1 Hour)
77 miles	from Daytona Beach (1 Hour and 30 minutes)
96 miles	from Tampa (2 Hours)
100 miles	from Jacksonville (2 hours)
112 miles	from St. Petersburg/Clearwater (2 hours and 30 minutes)
240 miles	from West Palm Beach (3 hour and 30 minutes)
300 miles	from Miami (4 hours)

If Flying:

Ocala is within a two-hour drive each of the following cities: Daytona Beach, Jacksonville, Orlando and Tampa. Gainesville Regional Airport offers connection flights, while Ocala International Airport at Taylor Field provides private, charter and air cargo services.

Florida Airport Abbreviations near Ocala:

Gainesville Regional Airport (**GNV/GRA**)
Orlando International (**MCO**) or Orlando Sanford (**SFB**)
Daytona Beach International (**DBA**)
Tampa International Airport (**TPA**)
St. Petersburg/Clearwater International (**PIE**)
Jacksonville International (**JAX**)
West Palm Beach (**PBI**)
Miami International (**MIA**)

SPRING 2012 CRUSADE LEADERS CONTACT INFORMATION

Rev. LaTousha Daniels
LD Ministries

ldaniels@latoushadaniels.com (email)
(305) 414-9556 Direct

www.latoushadaniels.com (website)
(305) 638-3338 Ministry

Administration

Area Coordinator

South Florida (Miami, Ft. Lauderdale and Palm Beach)

- **Rev. LaTousha Daniels**

Central Florida (Lakeland, Orlando, Lake Wales)

- **Pastor Catrena Johnson** catrenascott@bellsouth.net

Tampa Bay

- **Rev Willie Dixon** wdixon2558@aol.com

North Carolina and New Jersey

- **Min. Laketa Mckinney**

Ministry Coordinator(s)

Praise and Worship Leader(s)

- **Evangelist Janet Phelps** janetphelps8@aol.com
- **Sis. Katrina Kelly** brown8.eyes75@yahoo.com

Music/Musicians Director(s)

- **Minister Ozanda Gray** ozgray@yahoo.com

Prayer/Intercessor Coordinator

- **Mother Gloria Conner** gloria200107305@yahoo.com

2012 Event Coordinators

Food and Refreshment Coordinator(s)

- **Elder Janice Wright**

Hotel Accommodations

- **Dea. Jacqueline Newkirk** jacquelinelaj@yahoo.com

Logistics and Event Set-up Coordinator

- **Vacant**

LD Ministries

LD Ministries is an evangelistic ministry committed to ministering the message of Jesus Christ to the Body of Christ and winning souls for the Kingdom of God.

LD Ministries is headed by LaTousha Daniels a called evangelist who was born in Miami Florida. This ordained evangelist is a humble servant of the Lord who is committed to ushering the people of God into their destinies.

Grace In Motion is a division of LD Ministries which is committed to the transformation of Florida Prisoners' lives through presentation of the gospel of Jesus Christ through song, dance and the preaching of the gospel of Jesus Christ.

Positioned as the National Evangelist of Hang on Ministries, a division of the Church of Philadelphia, in Charlotte North Carolina, Evangelist Daniels ministers with a passion, precision, humor and God's anointing.

Believing that charity begins at home, Rev. Daniels serves faithfully in her local church.

Email:

Phone:

Website:

Contact Information:

ldaniels@latoushadaniels.com

(305) 638-3338

(305)414-9556

www.latoushadaniels.com